

## CONTACT US

The Shelter's main campus, which includes Admissions, Adoptions, the Clare Eddy Thaw Animal Hospital and The Roddey Burdine Rehabilitation Center, is located at 100 Caja del Rio Road in Santa Fe, N.M.

### Admissions

505-983-4309, ext. 1606

### Adoptions

505-983-4309, ext. 1610

### Thaw Animal Hospital

505-983-2755

### Spay/Neuter & Wellness Clinic

2570 Camino Entrada,  
505-474-6422

### Look What the Cat Dragged In

2570 Camino Entrada,  
505-474-6300

### Look What the Cat Dragged In 2

541 W. Cordova Road,  
505-780-8975



### Santa Fe Animal Shelter

100 Caja del Rio Road  
Santa Fe, N.M. 87507  
sfhumanesociety.org

## HOW YOU CAN HELP



Shelter videographer Jamie Meridith won a top grant from the Petco Foundation for her moving story about adopting Lester. Watch it at <http://bit.ly/2sTVBmp>.

**OUR FINANCIAL PICTURE** would not be complete without the grants we receive to support our programs. We are indebted to those foundations, corporations and agencies that make every life we help possible. Last year, our top grant funders included the PetSmart Charities, Petco Foundation, Frost Foundation, Melville Hankins Family Foundation, Maddies Fund, Bissell Foundation and the Banfield Foundation. We are equally grateful for the support of our community, including businesses that are committed to our work. Our major partnerships in 2016 include: Subaru of Santa Fe, Fix My Roof, Teca Tu and Back Road Pizza.

**INDIVIDUAL DONORS** are the lifeblood of the Santa Fe Animal Shelter. Without their support, we could not operate. We consider donors part of our Shelter family and it is only because of their support that we are able to stay at the forefront of animal sheltering. Please consider making a donation today to make our work possible.

Donate at [www.sfhumanesociety.org](http://www.sfhumanesociety.org).

{CONNECT WITH US!}



Santa Fe Animal Shelter

2016 **IMPACT** REPORT  
{saving lives **together**}



## OUR **COMMUNITY EFFORT** TO SAVE LIVES



**Did you know** that every single day — 365 days per year — the Santa Fe Animal Shelter takes in the cold, the hungry, the scared, the neglected and the injured? We do our best to comfort and heal every single animal who comes through our door and set them on a better path. It's what we do.

My former role as Medical Director allowed me to see firsthand the challenging cases that enter our facility. From homeless dogs hit by cars, terrified and needing not just extensive medical

care but one-on-one support on that long road to a new life, to kittens separated from their mothers, requiring round the clock bottle feeding, we are there for them.

I am immensely proud of the work we do at the Santa Fe Animal Shelter, and you should be too. With less than 10 percent of our funding coming from government contracts, we rely on individual supporters like you. It truly is a community effort, and it is amazing what we can accomplish when we all work together.

In 2016, we wrapped up an incredible year of helping animals and keeping relationships together in our community and beyond. We know that with your help we can continue to be there for every animal in need.

With my deepest respect,  
Jennifer Steketee, DVM

Executive Director  
Santa Fe Animal Shelter

Feel free to contact me directly at 505-983-4309 x1201  
or [jsteketee@sfhumanesociety.org](mailto:jsteketee@sfhumanesociety.org) with any questions  
or to arrange a tour.

## WHO **WE** ARE

### **BOARD OF DIRECTORS**

**Roddey Burdine**, President

**Jan Ballew**, Vice President

**Leta Worthington**,

Secretary

**Bill Synnamon**, Treasurer

**Robert Basler**, Director

**Michele Cook**, Director, 2017

**Mary Kehoe**, Director

**Allene Lapidis**, Director

**Caren Shiozaki**, Director

**Bill Thornton**, Director

**Carl Trujillo**, Director

**Mary Martin**, Executive

Director, 2009-Nov. 2016

**Dr. Jennifer Steketee**,

Executive Director,

Nov. 2016 to present

### **ADMINISTRATION**

**Gabrielle Amster**, Director of  
Development

**Emily Burlingame**, Co-Director  
of Behavior & Training

**Solange Del Arco**, Director of  
Public Clinics

**Robert Hernandez**, Managing  
Director 2003-July 2016

**Monica Gonzalez**, Receiving &  
Licensing Director

**Steve Herrera**, Facilities  
Manager

**Dr. Sara Lewis**, Medical  
Director

**Brittany Linkenheimer**, Co-  
Director of Behavior & Training

**Dylan Moore**, Director of  
Adoptions

**Hannah Padilla**, Director of  
Behavior & Training,  
2014-May 2017

**Laura Parker**, Director of  
Finances

**Ben Swan**, Public Information  
Officer

The Santa Fe Animal Shelter has been there for companion animals and their guardians since 1939. As Northern New Mexico's largest animal-welfare organization, the shelter has served as a resource for the community and as a second chance for those animals who are lost, injured, neglected, abused or simply unwanted. We do it with a simple guiding philosophy in mind: Support Animals, Save Lives and Spread Compassion.

But we don't do it alone. The Shelter stands alongside many partners who help make our work possible. Thanks to all of you for making the Santa Fe Animal Shelter one of the nation's most progressive shelters.



{4,436 **LIVES** SAVED}

{6,812 **ANIMALS** SPAYED/NEUTERED}

## OUR **EVENTS** IN THE COMMUNITY



**W**e host several events throughout the year for visibility, community outreach and fundraising. The largest events include the Barkin' Ball, Stray Pride Parade, the Children's Pet Parade and the ever-popular Doggie Dip, in addition to our holiday Farolito Lighting Ceremony at the Shelter. In 2016, we hosted the Indigo Girls at the Lensic Performing Arts Center to support our work with homeless animals. If you are interested in sponsoring an event, please contact our Business Coordinator at 505-983-4309, ext. 1115.

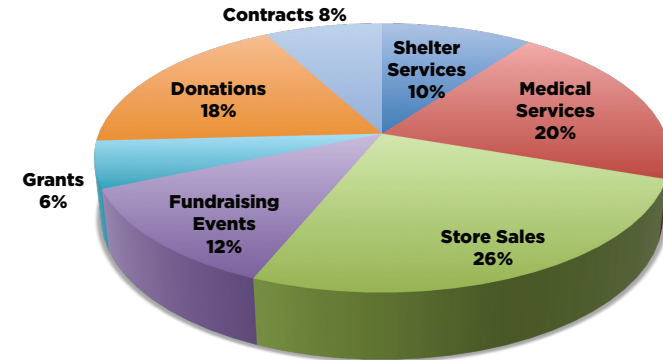


{ 16,000 **ANIMAL LIVES** TOUCHED }  
THROUGH SHELTER PROGRAMS

## OUR **FINANCIAL** PICTURE

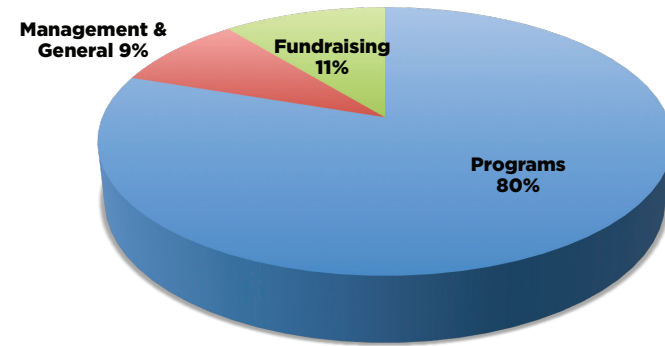
As a private, nonprofit animal shelter, the Santa Fe Animal Shelter receives no direct funding from city/county, state or federal sources. Our income is made up mainly from donations from people like you, in addition to Shelter and Medical Services, Fundraising Events, Grants, Contracts and from our Resale Stores, Look What the Cat Dragged In 1 and 2.

### OUR **INCOME** 2016



### OUR **EXPENSES** 2016

The majority of our expenses provide direct services to homeless and traumatized animals through our programs. We help animals with the best staff we can find — people who are experts in their fields. With your help, we stock our clinics, adoption and admission departments and our rehabilitation center with medical supplies, pet food and equipment needed to keep our animals healthy, happy and ready for new homes. Expenses also include Fundraising and Management.



{2016 BUDGET: **\$5.8 MILLION**}

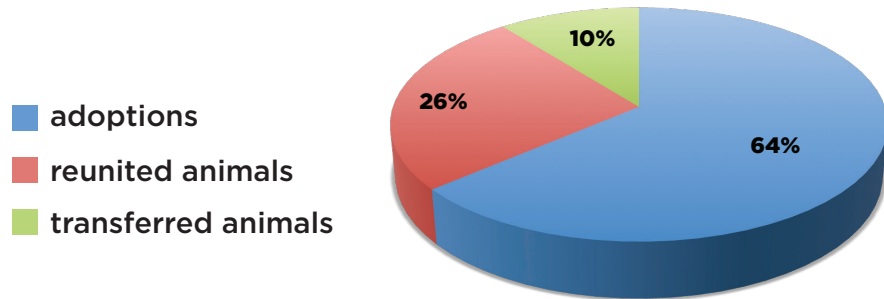
For detailed reports of our income and expenses, please visit GuideStar, [www.guidestar.org](http://www.guidestar.org), or Charity Navigator, [www.charitynavigator.org](http://www.charitynavigator.org).



## OUR **NUMBERS** MAKE A DIFFERENCE

In **2016**, we ...

Took in **4,436** animals;  
 Found new homes for **2,851** animals;  
 Returned **1,149** animals to their homes;  
 Gave **476** animals a second chance with Shelter partners;  
 Spayed or neutered **6,812** animals.



## OUR **VOLUNTEERS** MAKE IT HAPPEN

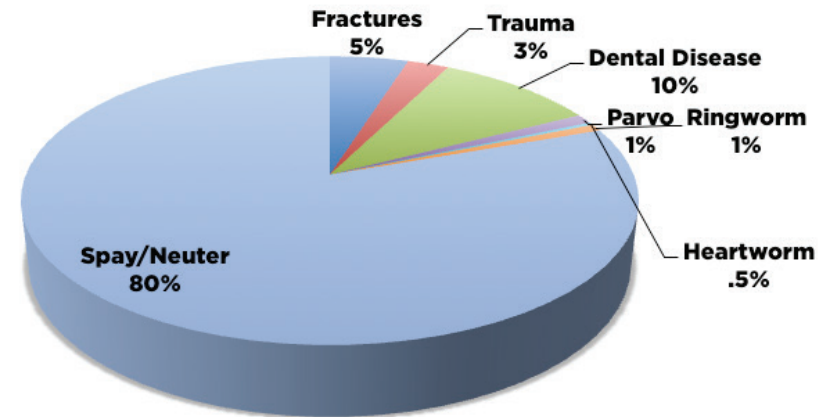
Volunteers are a critical component of the Santa Fe Animal Shelter. Our more than 335 dedicated volunteers in 2016 provided more than 20,000 hours, contributing invaluable help in all departments, including the Shelter Clinic, Admission, Adoptions, Rehabilitation, Dog Walking, Cat Cuddling, Fostering, Public Animal Hospital, Community Outreach, Humane Education and our Resale Stores.



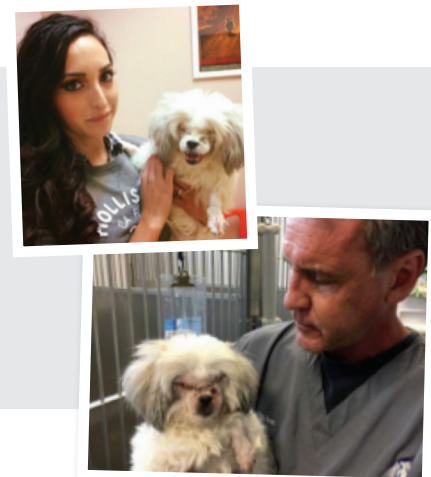
## NEVER TOO SICK OR **INJURED** FOR LOVE

Every animal who comes through our doors requires veterinary treatment of some kind — whether it's as simple as a vaccination or as involved as trauma surgery. Our clinic staff is busy every day of the year, making sure all our animals are healthy and happy, no matter how long healing takes. It's only through the support of our donors that we can be there for all animals in need. Here's a breakdown of some of the services our clinic provides.

### Shelter animal treatment



**Pixie** came to us with terribly uncomfortable glaucoma in both eyes. She had lived with this condition for years before coming to the Shelter. Now, after having both eyes removed, (which was the source of her discomfort), she is a happy, wiggly dog who has received a second chance and a new home with an adopter who has another blind dog.



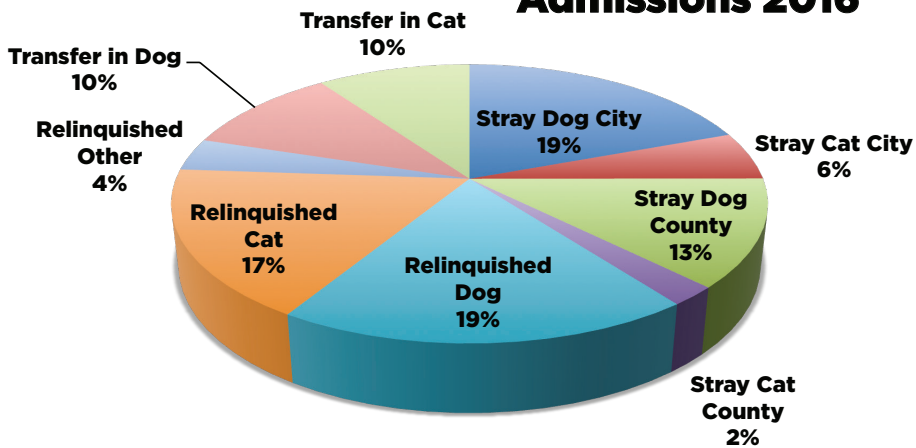
{1,149 **LOST** ANIMALS REUNITED}

{138 ANIMALS WITH **FRACTURES** HELPED}

# HELP FOR LOST, **STRAY** OR UNWANTED

As an open-admission shelter, we accept all companion animals who come through our doors, no matter what their condition. Some are injured; others are scared; most are traumatized, not knowing what will happen to them. We give them a chance to relax, offer them nutritious food and a warm, comfortable place to live. We immediately work to reunite people with their lost animal companions, and re-home those animals who have gone unclaimed into new homes. Our Behavior team is critical in helping animals overcome their anxiety and learn to trust again. Here's a look at how animals come into our facility.

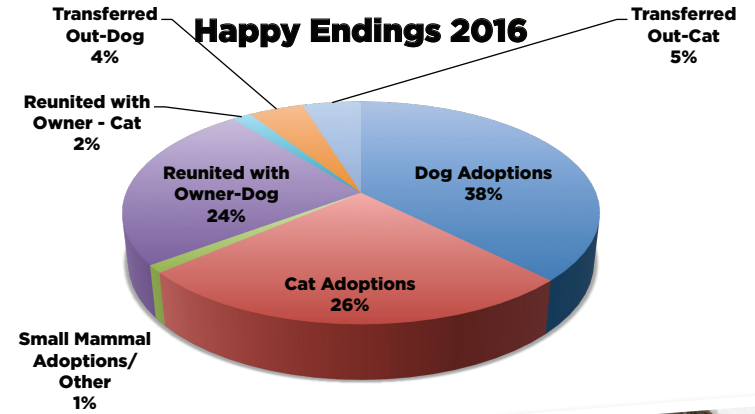
## Admissions 2016



# A SECOND **CHANCE** FOR LOVE

Matchmaking is an important part of our adoption process, and we pride ourselves in helping animal lovers find a companion who will fit their lifestyle. In 2016, we found homes for 2,851 animals, returned 1,149 animals to their homes and gave 476 animals a second chance with our Shelter partners. Here's a breakdown of those numbers by animal types – if only we could break it down by love!

## Happy Endings 2016



To view our adoptable animals, visit [sfhumansociety.org](http://sfhumansociety.org).



**From Cassidy:** "Today is the 3-month anniversary of the adoption of the husky mix now known as Nikita, and this is her first walk off the leash. I have never seen a happier dog and she celebrated by hopping over snow-covered bushes like a gazelle! Thanks again Santa Fe Animal Shelter."

{OUR LIVE-RELEASE **RATE** IS 94.2 PERCENT}

{476 **ANIMALS** TRANSFERRED TO PARTNERS}

# OUR **COMMUNITY PROGRAMS** TO SAVE LIVES

The Santa Fe Animal Shelter's diverse and evolving programs give homeless and traumatized animals a second chance at a loving life. We also work to strengthen the animal-human bond in the community so all companion animals have healthy and happy lives.



**Admissions & licensing:** Our counselors work tirelessly to reunite lost and stray animals with their guardians; our canvassers help residents keep their pets safe through licensing and awareness of shelter programs.

**Veterinary Services:** The Clare Eddy Thaw Animal Hospital offers complete veterinary services to the general public.

**The Spay/Neuter & Wellness Clinic** at 2570-B Camino Entrada provides affordable, high-quality spay/neuter surgeries and vaccination clinics for owned animals.

**The Shelter's clinic** offers spay/neuter surgeries, vaccinations and lifesaving veterinary care to all homeless animals.

**Behavior and training:** Our Behavior Department team members work with each homeless dog, offering them canine playgroups and daily walks, and, if necessary, behavior modifications. Post-adoption behavior help is available through our Behavior Helpline, online videos and one-on-one counseling.

**New Hope program:** This unique program helps find temporary and long-term homes for animals who might need extra time before finding a forever family. The program encompasses foster homes, hospice for end-of-life care, and transferring animals to other shelters and specialized rescue groups, where they might have a better chance of finding homes.

**Adoptions:** In addition to our main adoption facility, the Shelter supports special community adoption events several times a week throughout the year.

**Community Outreach:** Our Community Outreach program brings our services to neighborhoods where they are most needed; the Gatos de Santa Fe or community cat program provides free spaying/neutering and vaccinations for free-living cats; and our Mi Perro es Familia program works with families to keep their pets healthy and happy in their own homes.

**Humane education:** Throughout the year, humane education volunteers visit most Santa Fe schools, clubs and after-school programs and present to more

than 1,000 students in pre-, elementary, middle and high-school students. We also offer tours to the Shelter and community presentations.

**Pet outreach:** Every week more than 40 Pet Outreach volunteers and their dogs visit hospitals, nursing homes, and retirement communities. The Wags & Words program brings dogs into area schools and libraries to help children with reading difficulties.

**Quality resale to help animals:** Our resale stores, Look What the Cat Dragged In, 2570 Camino Entrada and 541 W. Cordova Road, feature fine, gently used housewares, clothes, furniture, décor, artwork, jewelry and more. All proceeds support Shelter programs.

{2,285 **NEW HOMES** FOR ANIMALS FOUND}