



Destination: Thriving

2017 Community Report



**solid
ground** 
Building community to end poverty

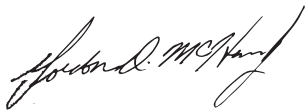
Dear Friends:

At Solid Ground, we're guides, drivers and mapmakers, working together to help program participants journey toward a destination beyond poverty, homelessness, hunger and judgment. Our Stabilization Services, Hunger & Food Resources and Residential Services all focus on getting people headed where they want to go in life. And our Access and Downtown Circulator Bus drivers carry more than **40,000 people a year** – literally taking them where they want to be.

Our direct service staff are guides who help program participants navigate and overcome the barriers they face. We share a common sense of destination: moving to a place where everyone in our community can thrive. We first used the transportation metaphor to talk about Solid Ground's work in a video that debuted at our annual Building Community Luncheon in April 2018. It is such a powerful way to describe what we do at Solid Ground that we wanted to share it with you here, in words and images.

Of course, the fuel that makes our engine run is **YOU**: our donors, sponsors and supporters! Your contributions keep us on the road and support the folks who come to us for services. Last year, you helped us guide over **76,000 program participants** to their destinations: beyond housing instability and homelessness, to improved health and nutrition, and on their way out of poverty. Thank you for being such an important part of our community, and we ask you to continue this journey with us in 2018.

Warm regards,



Gordon McHenry, Jr.
President & CEO



Wendy Werblin
Chair, Board of Directors

Since 1974, Solid Ground has driven toward a community beyond poverty, helping people living on low incomes get where they want to go. We:

Support people's food security.

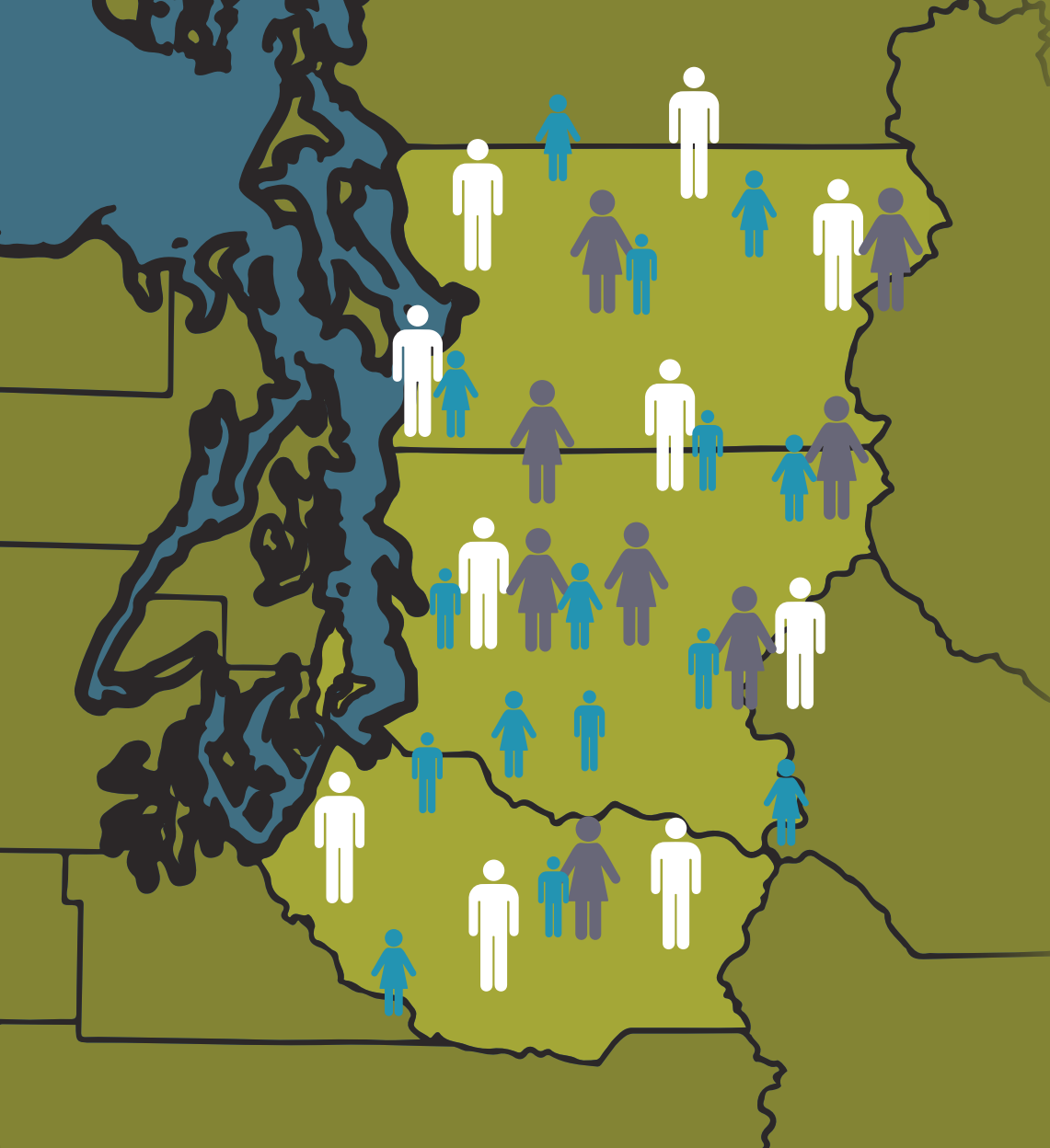
Help people stay in their homes.

Provide shelter and housing when they are forced out.

Increase people's mobility and access to their community.



76,042 people participated in Solid Ground programs and services in 2017.

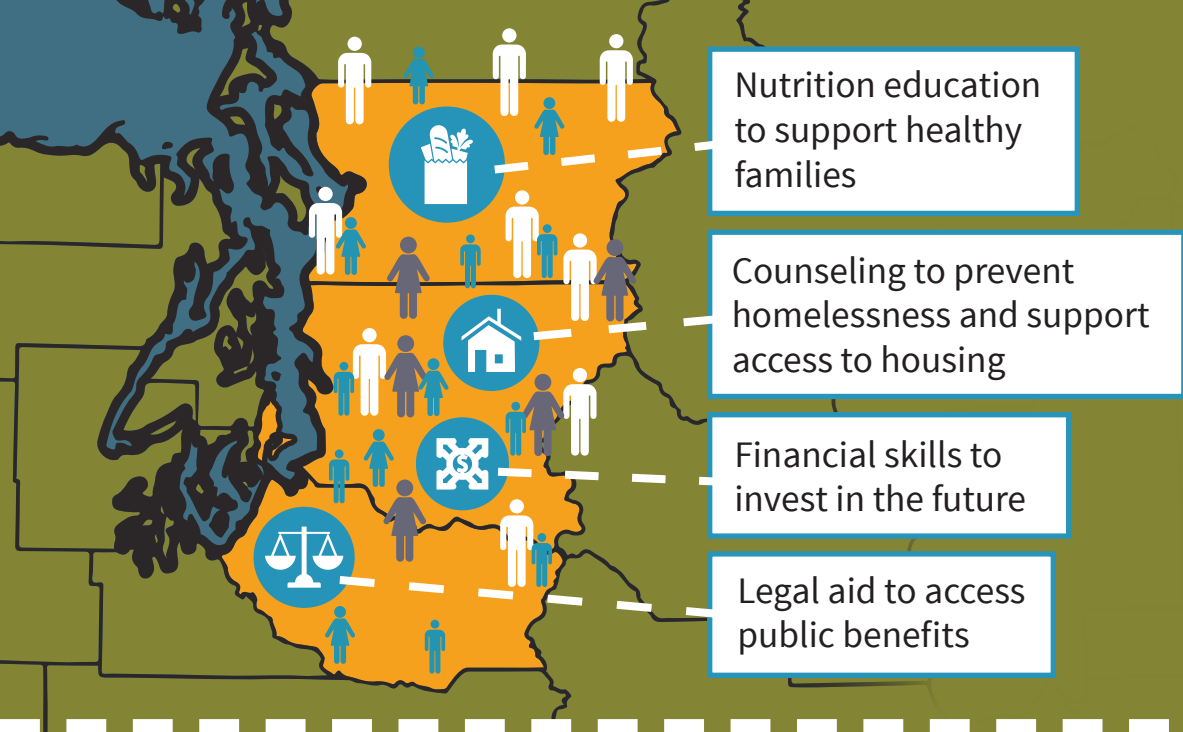


Over the years, we've helped well over a million people find and keep stable homes, raise healthy families, and get where they want to go!

We've listened to the people who come to us – and we've responded by developing new services based on what we've heard.

ADDRESSING HOMELESSNESS

- ▶ **3,695** people prevented from becoming homeless through counseling, grants and referrals
- ▶ **312** people received emergency shelter
- ▶ **326** households lived in transitional housing
- ▶ **63,890** bednights of shelter and transitional housing
- ▶ **663** formerly homeless people made progress to stabilize and thrive in long-term housing



GIVING PEOPLE SKILLS TO THRIVE

- ▶ **298** people completed classes in nutritious cooking on a limited budget
- ▶ **386** children tutored to improve school success
- ▶ **1,233** individuals educated and empowered to achieve greater financial stability
- ▶ **2,469** children introduced to healthy life choices through nutrition classes
- ▶ **2,107** people gained resources and information to grow their own food

Hunger & Food Resources

- Community Food Education**
Building community through food and nutrition education
- Food System Support**
Comprehensive support to Seattle's food bank network

Residential Services

- Broadview Emergency Shelter**
Domestic violence shelter
- Family Shelter**
Emergency shelter for families
- Broadview Transitional Shelter**
Domestic violence transitional housing
- Santos Place**
Transitional and permanent supportive housing
- Sand Point Family Housing**
Permanent supportive housing

- Brettler Family Place**
Permanent affordable housing
- Phyllis Gutiérrez Kenney Place**
Permanent supportive and affordable housing

Advocacy

- Statewide Poverty Action Network**
Community organizing and public policy advocacy for a more equitable community
- Benefits Legal Assistance**
Legal assistance obtaining public benefits



But we realized that services alone were not enough. Many people who come to us face barriers to thriving such as institutional racism and systemic oppressions – especially immigrants, refugees and people of color.

LINKING PEOPLE TO ESSENTIAL RESOURCES

- ▶ **390** domestic violence survivors utilized comprehensive support, education and advocacy
- ▶ **498** people accessed legal aid to obtain governmental benefits
- ▶ **551** people received landlord-tenant counseling
- ▶ **281,109** rides got **41,436** elderly and people living with disabilities where they needed to go
- ▶ **18,042** people linked to essential resources

Transportation

Downtown Circulator Bus
Free fixed-route bus to downtown Seattle services

Access Transit & Center Park Shuttle
Transportation for seniors, people living with disabilities, and Center Park residents

Stabilization Services

Financial Fitness & Soft Skills
Financial and employment empowerment

Tenant Services
Tenant rights and responsibilities education

Homeless Prevention Case Management & Housing Stability Project
Homeless prevention services

JourneyHome
Diversion, rapid rehousing and housing search assistance

Regional Access Point
Diversion, housing assessments and resources


Resource Wire
Email blasts with community and jobs info for people with low incomes

Community Development

Anti-Racism Initiative
Undoing racism education, organizing and action

RSVP/Senior Volunteers
Opportunities specifically for senior volunteers

Community Volunteers
Volunteer opportunities for all



We take what we learn from our program participants – who after all, are the ones who know what they need to overcome poverty – and use that to change unfair laws across Washington state.

BUILDING A BETTER SAFETY NET

- ▶ **140,762** National Service and volunteer hours contributed to meet critical needs
- ▶ **7,795** people mobilized to engage in community building and anti-poverty initiatives
- ▶ **417** partnerships forged and strengthened with other community-based agencies

SUCCESSFUL ADVOCACY FOR AN EQUITABLE COMMUNITY




Increased TANF (Temporary Assistance for Needy Families) monthly cash grant by 2.5% (effective July 2018).



Passed SB 5347 to increase access to post-secondary education for parents who rely on TANF to meet their basic needs.



Prevented debt collection companies from charging consumers higher interest on their debts.



We help them raise their voices in City Hall, Olympia and elsewhere to advocate for policies that remove barriers to opportunity.

SUCCESSFUL ADVOCACY FOR AN EQUITABLE COMMUNITY



Prevented new cuts to critical state safety net programs, such as HEN (Housing and Essential Needs) and ABD (Aged, Blind and Disabled).



Submitted I-940 De-Escalate Washington to the state legislature.

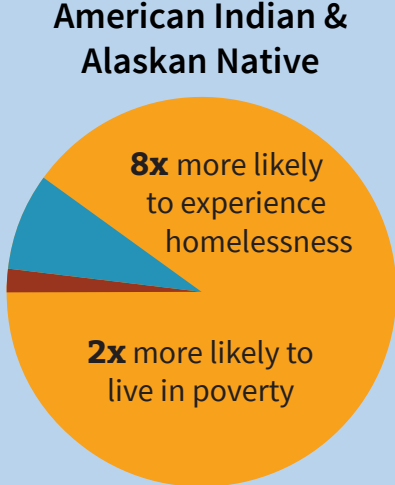
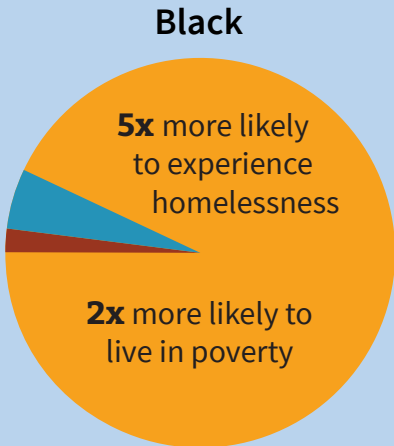
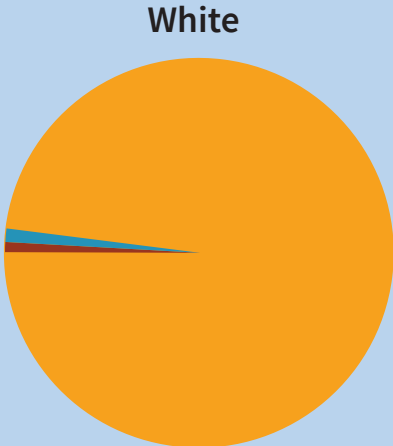


Supported the successful effort to “ban the box” that asks about criminal history on rental housing applications in Seattle.

RACIAL DISPARITIES IN KING COUNTY


We know the data agrees with what we see every day: People of color are harder hit by poverty throughout our community.

In our thriving county, historic numbers of people are living in poverty and on the streets as the barriers and challenges they face grow more complex.



■ Homeless ■ Poverty





Solid Ground's experience gives us a roadmap to meet their needs. For more than 44 years we've brought people together to overcome crises and thrive.



TAKE ACTION FOR SOCIAL JUSTICE

Every day, we witness the power of individuals coming together, as volunteers, advocates and donors, to respond to any challenge. Now more than ever, people like you have the power to chart a course toward a vibrant future for all.

Thanks for raising your voice and participating in our growing movement. Your passion and dedication help transform our community into the equitable place we know it can be.



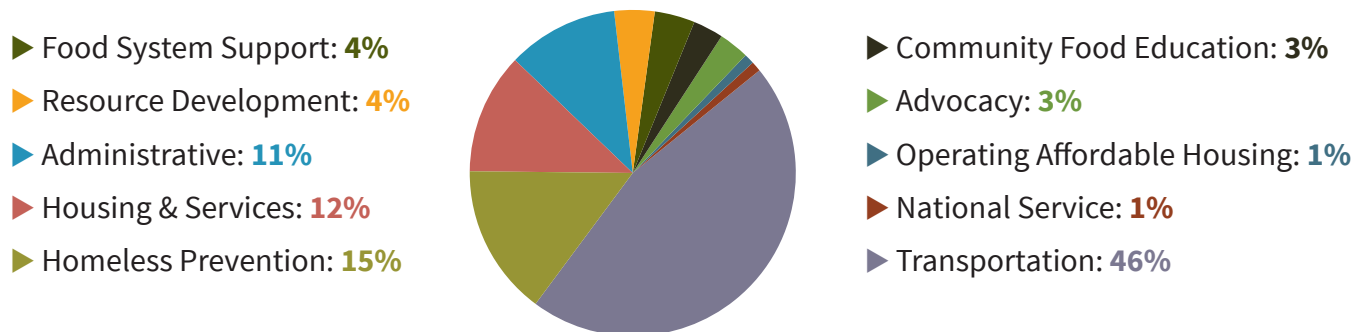
BOARD OF DIRECTORS

Chair — Wendy Werblin
Vice Chair — Justin Hellier
Treasurer — Alain J. Dias
Secretary — Secretary

John Babauta
D'Adre Cunningham
Heidi Eisenstein
Andrew Miller
Angel Mitchell

Sunil Sanghani
Julie Silverman
Lauren Vlas
Sherry Williams

2017 FINANCIALS



Federal Agencies	2,629,361
Washington State	1,195,879
King County	12,709,377
Seattle City	2,743,274
Other Government	43,772
Private Grants	1,001,121
Sponsorships	112,500
United Way Safety Net Allocation	90,100
Cash Donations	1,383,541
In-Kind Donations	420,528
Stock Donations	45,622
Client Copayments	161,999
Vendors & Agencies	331,970
Fiscal Agent Fees	79,044
Interest Income	5,895
Sales	102,051
Other Revenue	63,037
Rental Income	103,680
Total Revenue	23,222,751

Personnel	15,255,920
Includes salaries & benefits	
Occupancy	727,749
Rent, maintenance & utilities	
Outside Services	4,427,414
Contracted services, volunteer stipends, client assistance, etc.	
Supplies	571,700
General Expenses	2,110,869
Volunteer support, training, insurance, postage, communications, printing, equipment, promotional, taxes & licenses, fees, lobbying, etc.	
Capital Purchases	218,448
Depreciation expenses, gain/loss on assets	
Total Expenses	23,312,100

OUR SUPPORTERS

Solid Ground is honored to have the support of the following leading corporations, employee groups, foundations and other organizational partners.

\$100,000 & Up

Bill & Melinda Gates Foundation
The Brettler Family Foundation
DCG ONE
Endowment for Equal Justice
United Way of King County

\$50,000 - \$99,999

The Biella Foundation
Enterprise Foundation
League of Education Voters
Medina Foundation
Microsoft Corporation
Northwest Area Foundation
Verizon Wireless

\$25,000 – \$49,999

The Ellis Foundation
Employees Community Fund of Boeing Puget Sound
Mercy Housing Northwest
Safeco Insurance Foundation
Sea Mar Community Health Centers
The Seattle Foundation
Target
WestSide Baby
Working Poor Families Project

\$10,000 – \$24,999

Arcora Foundation
AT&T
BECU
Campion Foundation
Center for Responsible Lending
Charlie's Produce
Google
HomeStreet Bank
Hone Agency
Mary Kay Ash Charitable Foundation
Nesholm Family Foundation
Northwest Children's Foundation
OneFamily Foundation
PCS Wireless
RealNetworks Foundation
Sea Gals
Seattle Children's
Tableau Foundation
Treeline Foundation
William I. Smith Foundation

\$5,000 – \$9,999

The CoHo Team of Windermere Agents
Combined Federal Campaign of North Puget Sound
Combined Fund Drive
Getty Images, Inc.
Jamberry
James C. Allen Charitable Foundation
Master Builders Association of King & Snohomish Counties
Philadelphia Insurance Companies
Rita & Herbert Rosen Foundation
Share Our Strength
Sprague Israel Giles, Inc.
Swanson's Nursery
Toys for Kids
U.S. Bank Foundation
Virginia Mason Medical Center
Vulcan Inc.
Whole Foods Market
Woodland Park Zoo

\$1,000 – \$4,999

8 Limbs Yoga Centers, Inc.
Adobe Foundation
Alaska Airlines
Ally Community Development
Alston, Courtnage & Bassetti LLP
American Legion Auxiliary
Aquarium Tickets
Assumption Catholic Church
Birthday Dreams
CB Richard Ellis
City People's Garden Store
Comcast Cable
Community Foundation of North Central Washington
Equality Network Foundation
Facebook
Fales Foundation Trust
The Harrington-Schiff Foundation
Hasbro Children's Fund
Holy Rosary Parish
Intentional Futures
Joe Bae Salon
Kantor Taylor PC
King County Employee Giving Program

Liberty Mutual Insurance
Molina Healthcare, Inc.
Northlake Unitarian Universalist Church
Northwest Plan Services
Outlier Restaurant
The Pantry
Peck Family Foundation
Phinney Ridge Neighborhood Center
Pian Silverman Family Foundation
Project Night Night
Prosperity Now
Renah Blair Rietzke Family & Community Foundation
The Russell Family Foundation
Salmon Bay School
Seattle Aquarium
Seattle Storm
St. Stephen's Episcopal Church
The Summit Group
Sunshine Transportation
Tutta Bella
US Coast Guard
Veterane Family Foundation
Walsh Construction
Wyman Youth Trust

For lists of our Organizational Donors up to \$999 and our more than 1,700 generous Individual Donors, please visit:
www.solid-ground.org/about/supporters.





1501 North 45th Street
Seattle, WA 98103-6708

PHONE 206.694.6700
EMAIL info@solid-ground.org
WEB solid-ground.org

PRINTING DONATED | DCG ONE 6/2018